

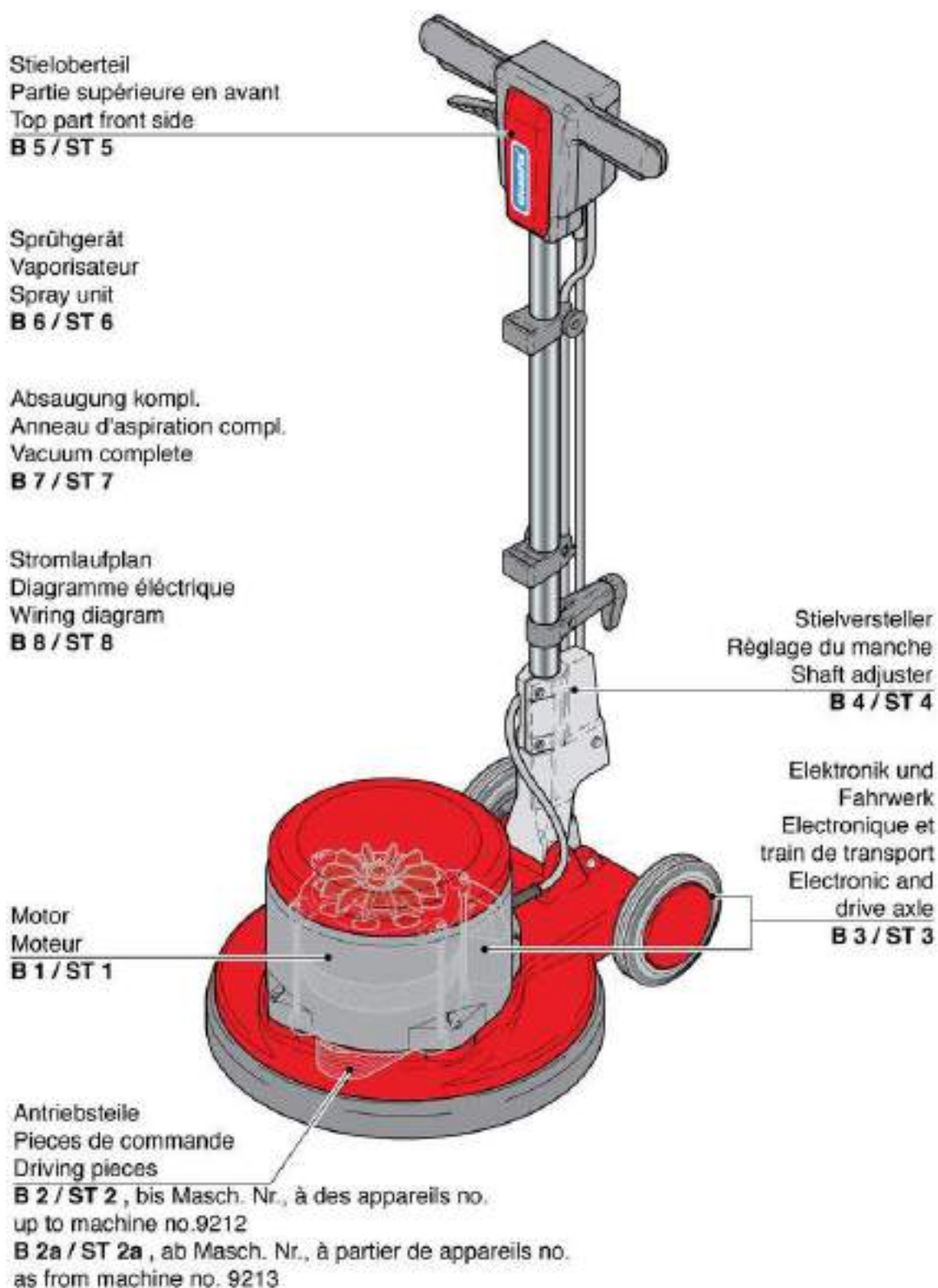
# R 44-450 High-Speed

## Table contents

Stand: 31.03.2017 16:12



### R 44-450 High-Speed



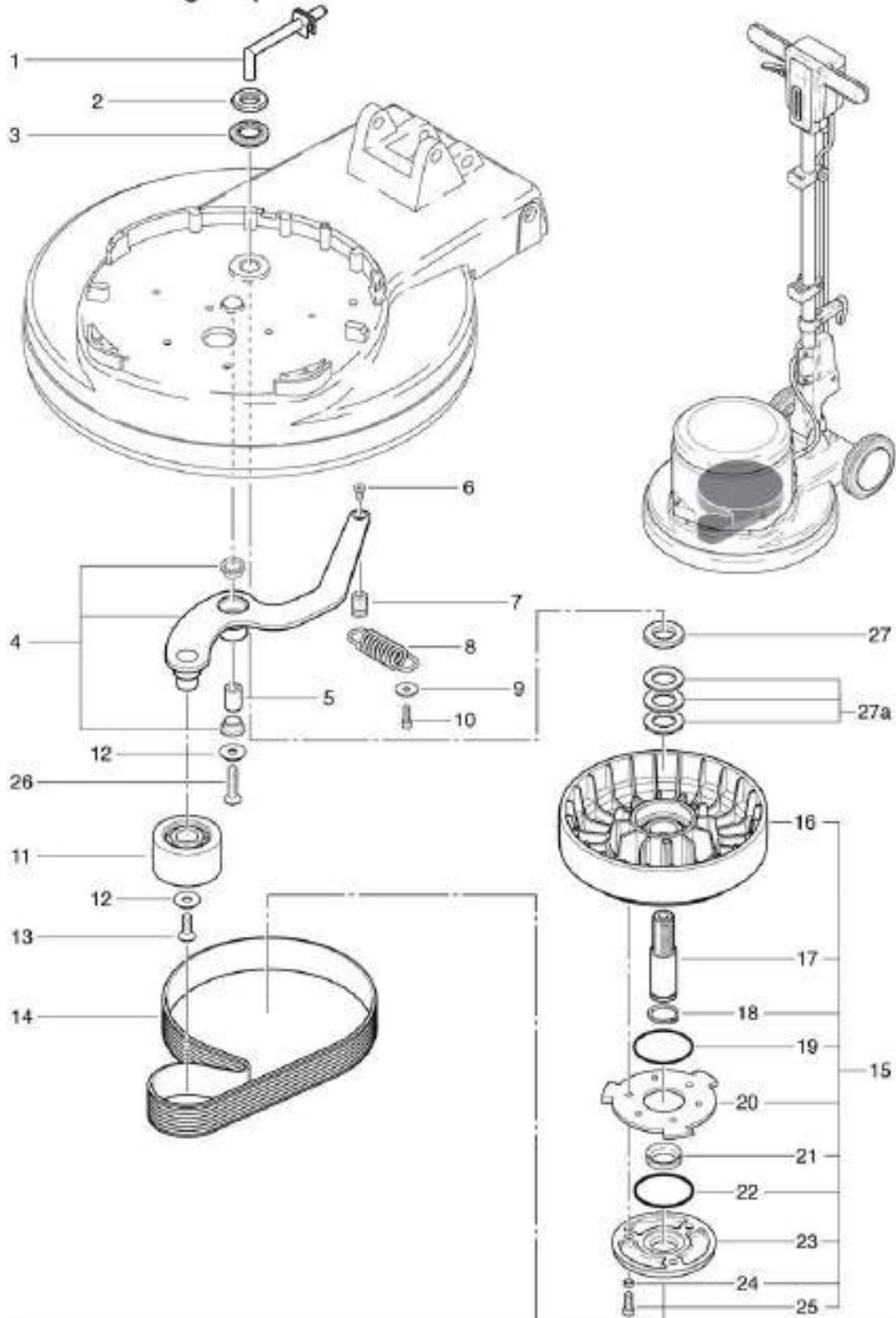
# R 44-450 High-Speed

## Driving pieces from machine No. 9213

Stand: 31.03.2017 16:12



R 44-450 High-Speed



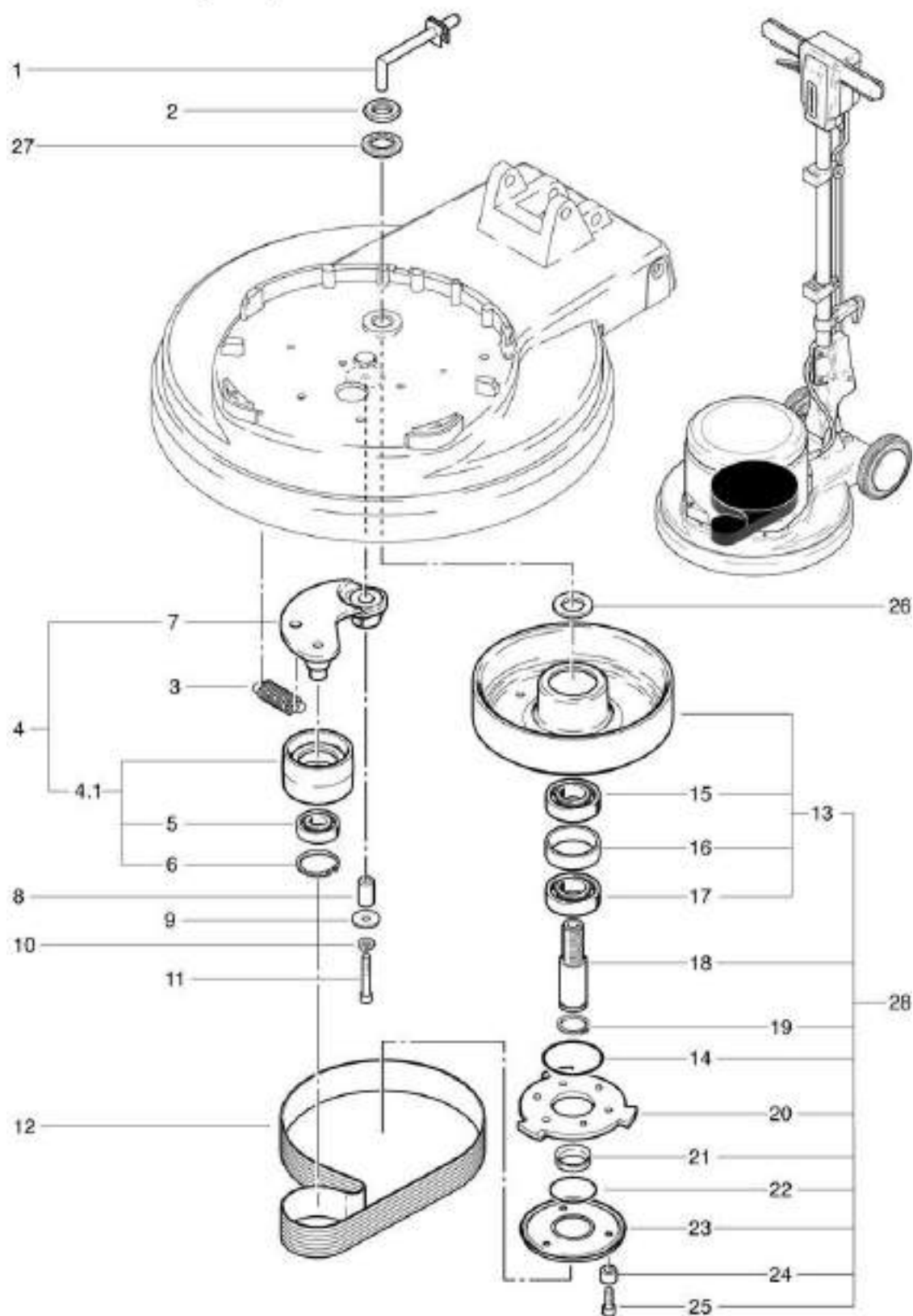
# R 44-450 High-Speed

## Driving pieces Masch.Nr up 9212

Stand: 31.03.2017 16:12



R 44-450 High-Speed



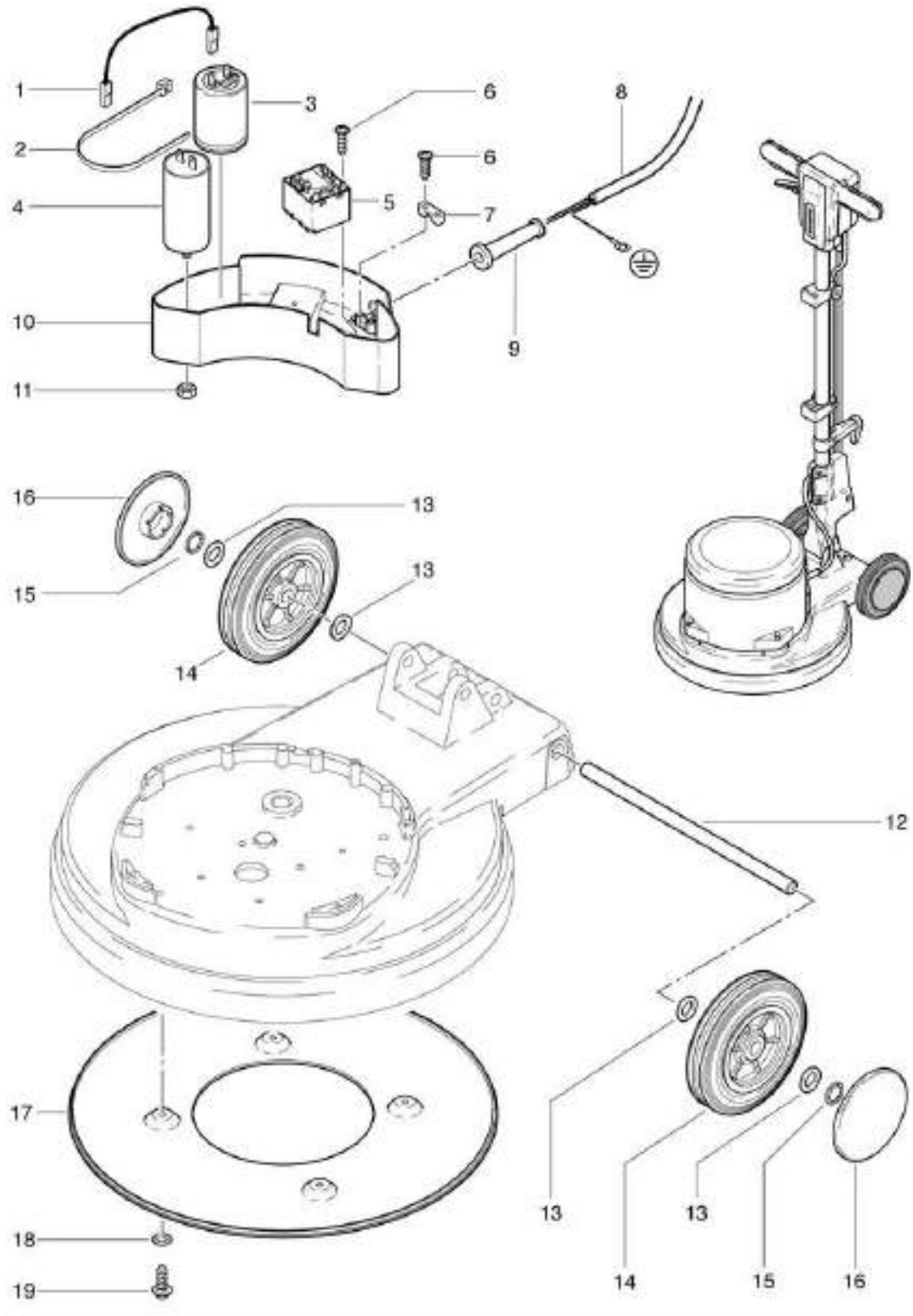
# R 44-450 High-Speed

## Electronic and drive axle

Stand: 31.03.2017 16:13



R 44-450 High-Speed



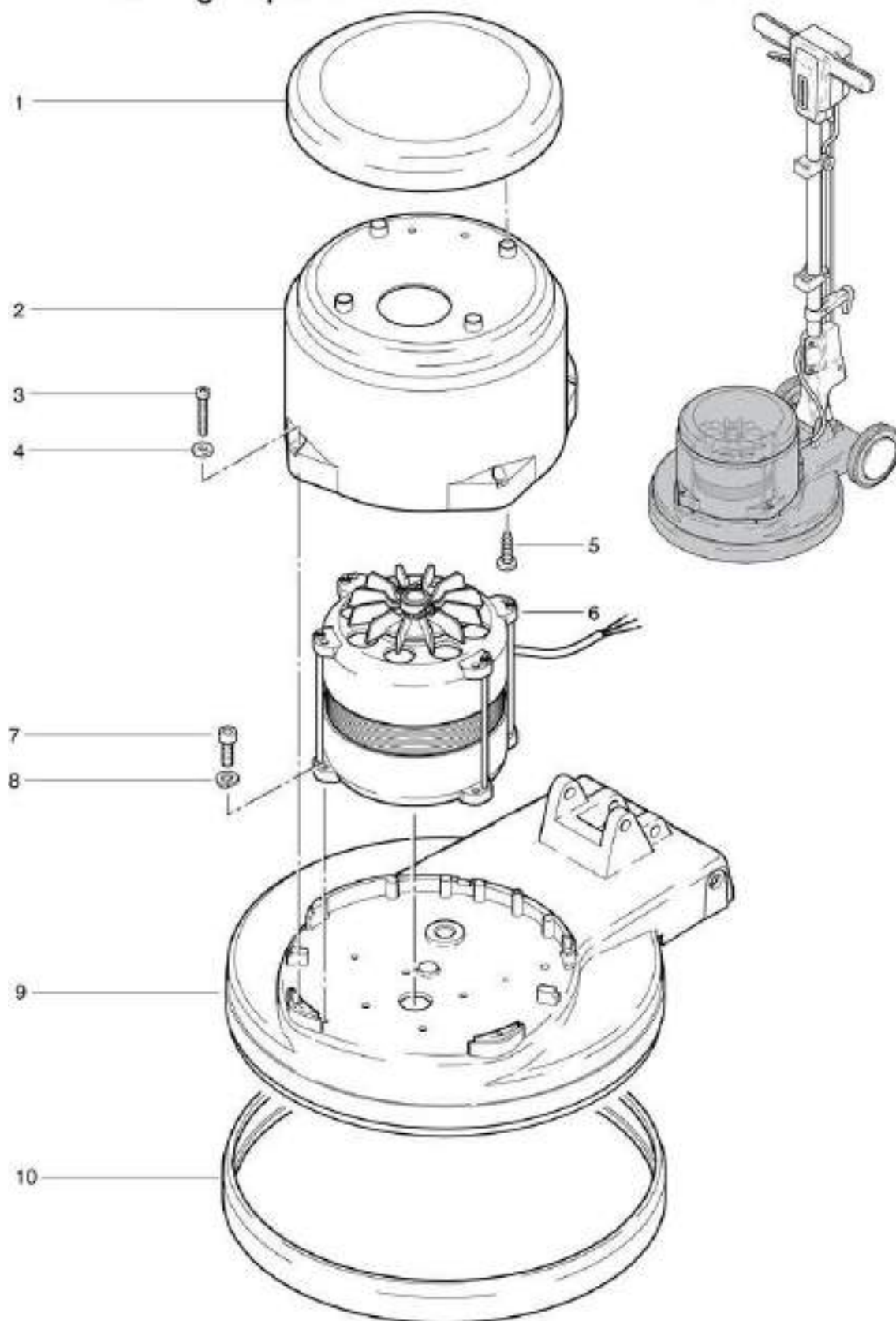
# R 44-450 High-Speed

## Motor

Stand: 31.03.2017 16:12



R 44-450 High-Speed



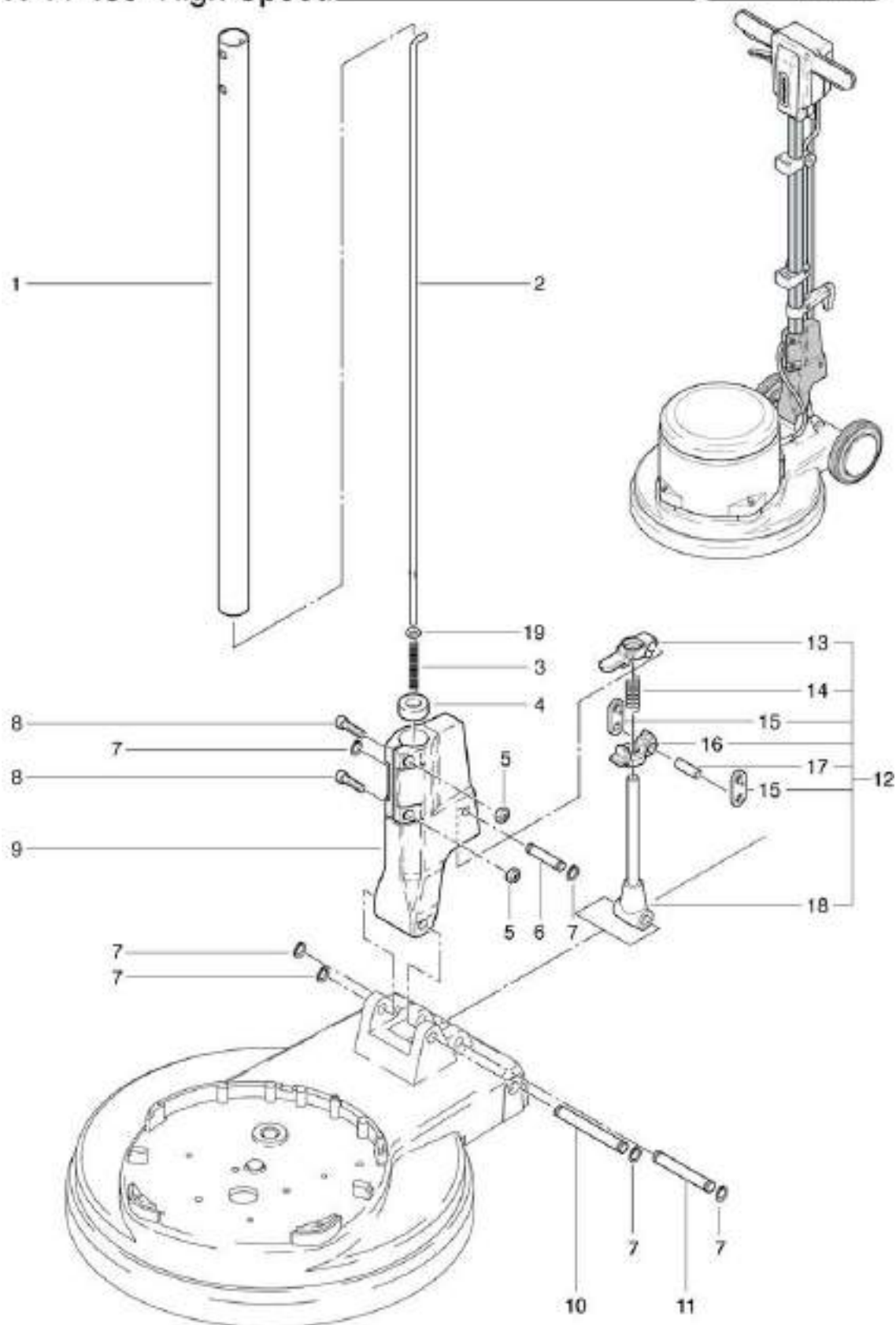
# R 44-450 High-Speed

## Shaft adjuster

Stand: 31.03.2017 16:13



R 44-450 High-Speed



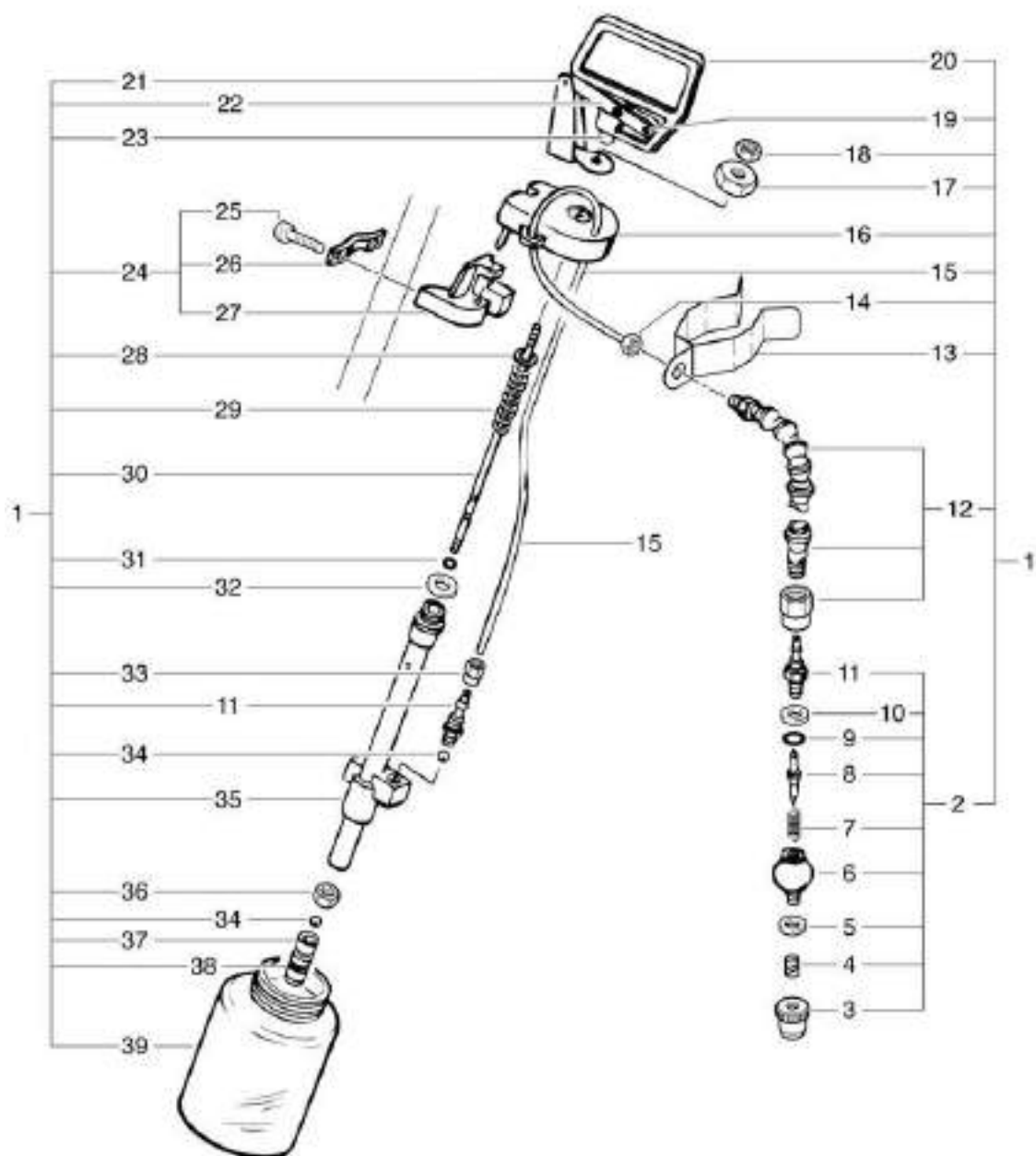
# R 44-450 High-Speed

## Spray unit

Stand: 31.03.2017 16:13



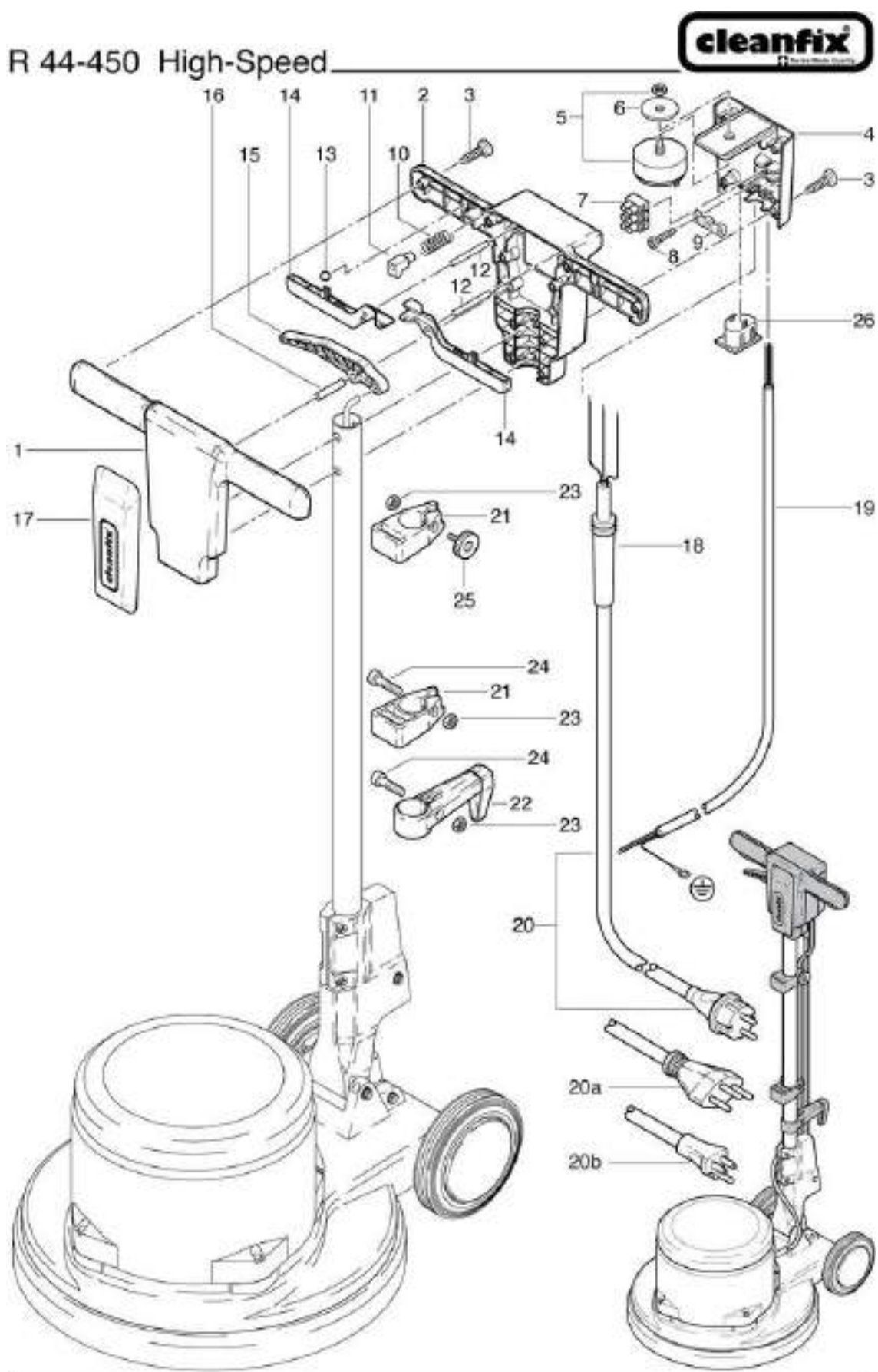
R 44-450 High-Speed



# R 44-450 High-Speed

## Top part front side

Stand: 31.03.2017 16:13



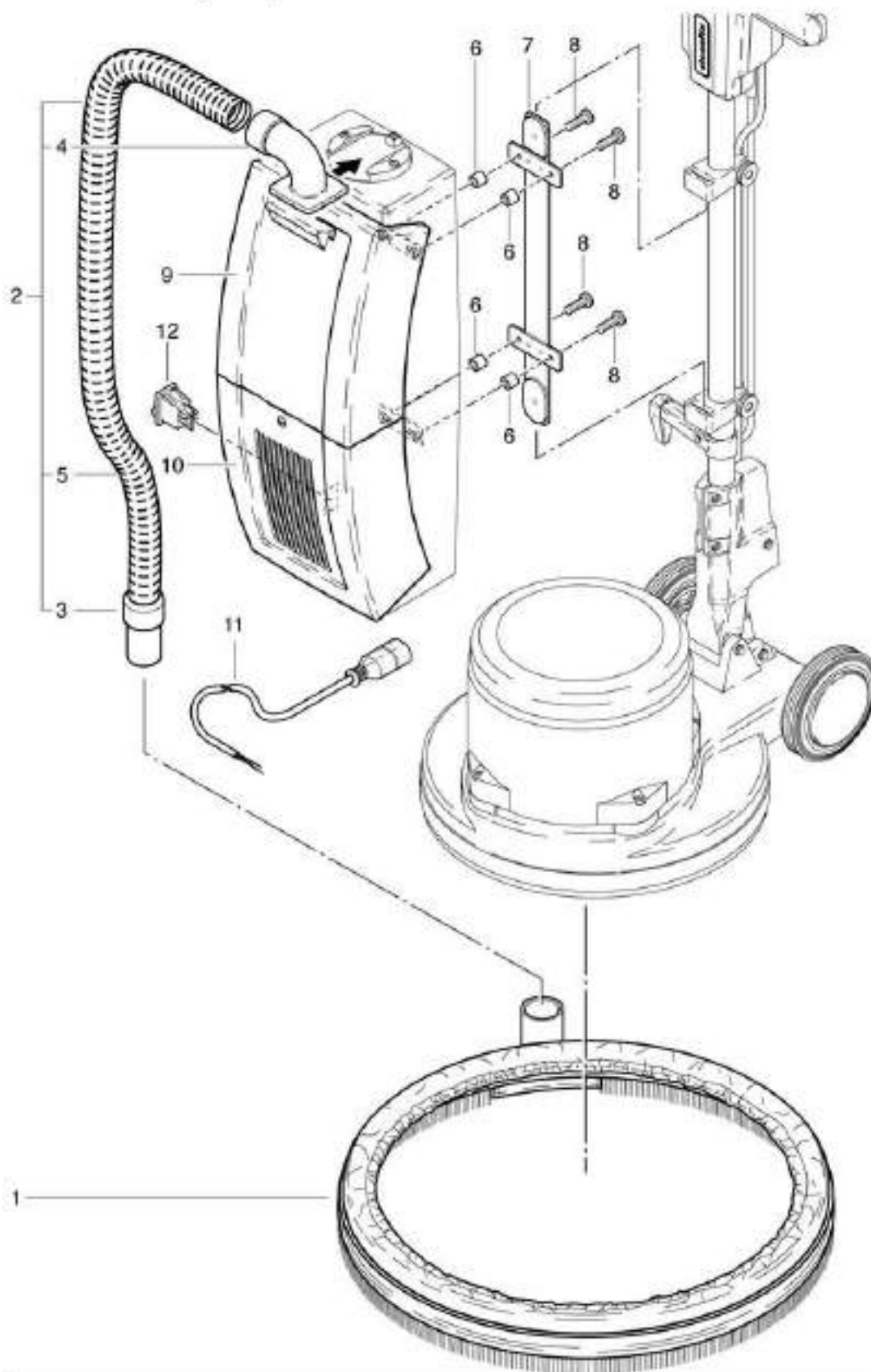


# R 44-450 High-Speed

## Vacuum complete

Stand: 31.03.2017 16:13

R 44-450 High-Speed



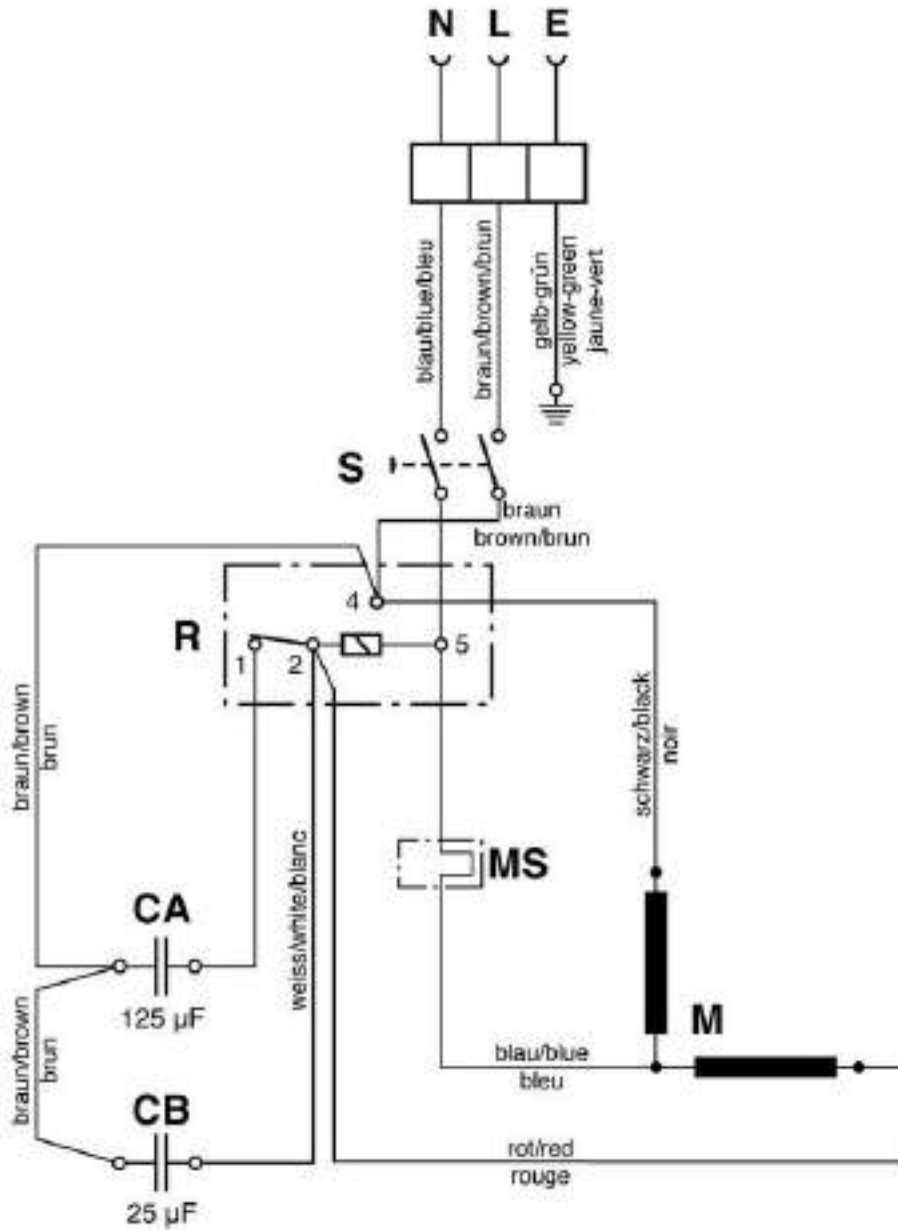
# R 44-450 High-Speed

## Wiring diagram

Stand: 31.03.2017 16:13



R 44-450 High-Speed



- S = Schalter Bürstmotor / Tumbler switch for motor / Interrupteur pour moteur  
R = Startrelais / Relais / Relais de démarrage  
CA = Anlaufkondensator 125 µF / Capacitor 125 µF / Capacitéur 125 µF  
CB = Betriebskondensator 25 µF / Capacitor 25 µF / Capacitéur 25 µF  
M = Motor / Motor / Moteur  
MS = Motorschutzschalter